



Fire Learning Network
Notes from the Field

Oregon Wildfire Meets Prescribed Burn

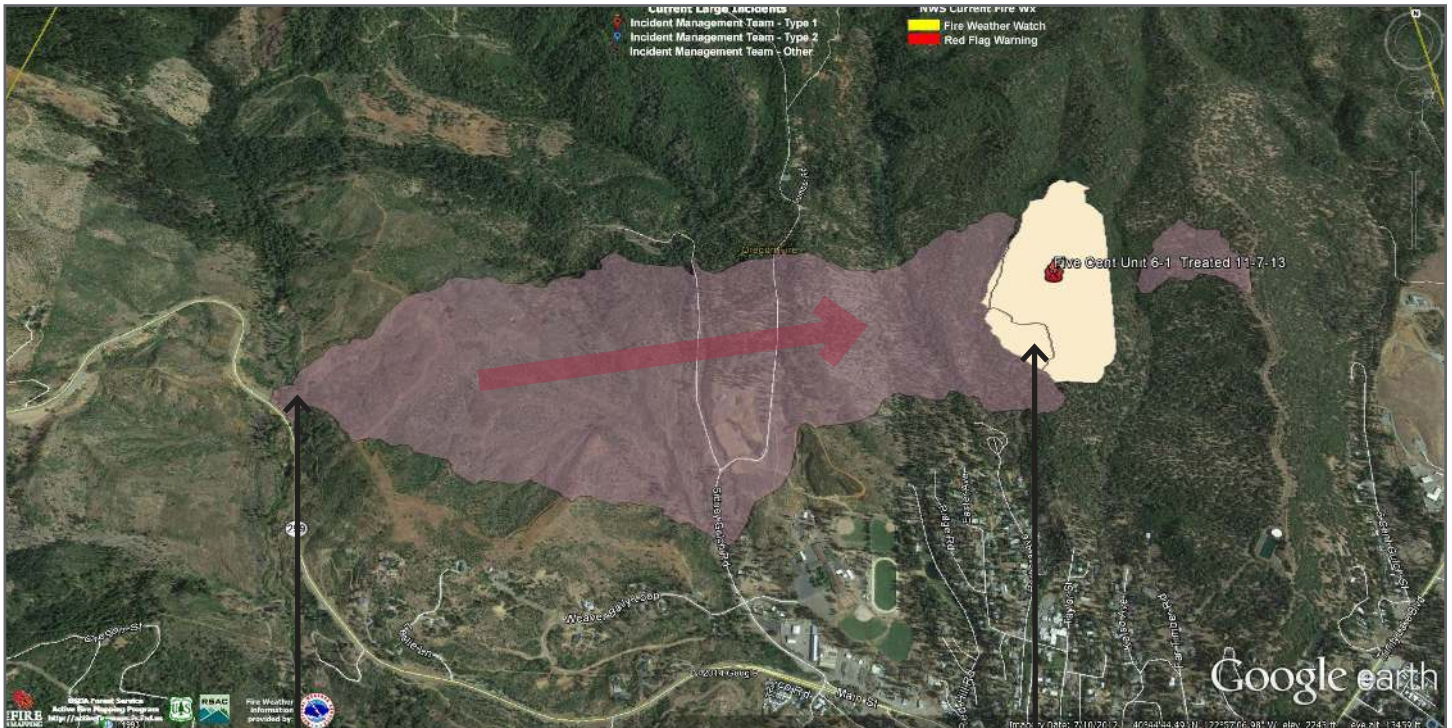
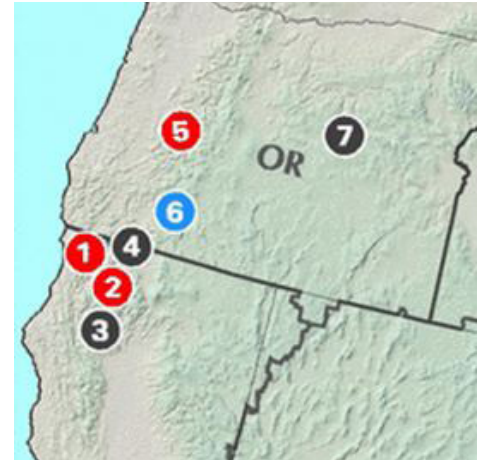
Weaverville, CA August 2014

In the Klamath Mountains of northern California, the somewhat confusingly-named Oregon Fire (circle 3 on the map at right) started on August 24, just north-west of Weaverville. Within a few days, it was fully contained at less than 600 acres, with the loss of only one structure. The aggressive suppression efforts were greatly aided by a well-placed prescribed fire treatment conducted last fall by the Forest Service, as can be seen in the image below.

The California Klamath-Siskiyou FLN had been planning to focus on developing a strategic prescribed fire management plan for the county in the coming year. This vivid example of treatment effectiveness will be valuable to that effort.

Right: Numerous other fires are currently burning in this landscape, including the Happy Camp complex (1) and the July complex (2).

Map detail from RSAC <http://activefiremaps.fs.fed.us/> (August 29, 2014)



OREGON FIRE
human-started
August 24, 2014

FIVE CENT UNIT
U.S. Forest Service prescribed fire
November 7, 2013

The Fire Learning Network is supported by *Promoting Ecosystem Resiliency through Collaboration: Landscapes, Learning and Restoration*, a cooperative agreement between The Nature Conservancy, USDA Forest Service and agencies of the Department of the Interior.

For more information about the FLN, contact Lynn Decker at ldecker@tnc.org or (801) 320-0524



An equal opportunity provider